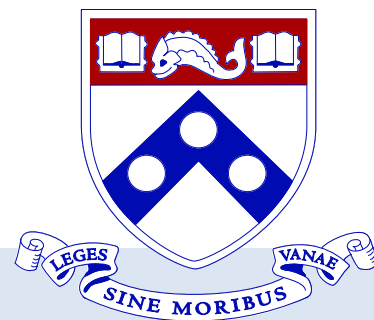


NEWSLETTER

FALL 2020



Administration

Gary Wu, MD

Co-Director

gdwu@penmedicine.upenn.edu

Klaus Kaestner, PhD

Co-Director

kaestner@penmedicine.upenn.edu

Rebecca G. Wells, MD

Associate Director

rgwells@penmedicine.upenn.edu

Kim Meyers-McCombs

Manager, Admin & Finance

kimmeyer@penmedicine.upenn.edu

Marielle Kent

Financial Coordinator

makent@penmedicine.upenn.edu

Core Facilities

Molecular Pathology & Imaging Core

(D) Jonathan Katz, MD

(TD) Kate Bennett

Host-Microbial Analytic and Repository Core

(D) Gary Wu, MD

(TD) Lillian Chau, MS

Genetically-Modified Mouse Core

(D) Douglas Epstein, PhD

(TD) Jean Richa, PhD

Biomedical Data Science Core

(D) Hongzhe Li, PhD

(Co-D) James D. Lewis, MD, MSCE

(TD) Lisa Nessel, MSS, MLSP

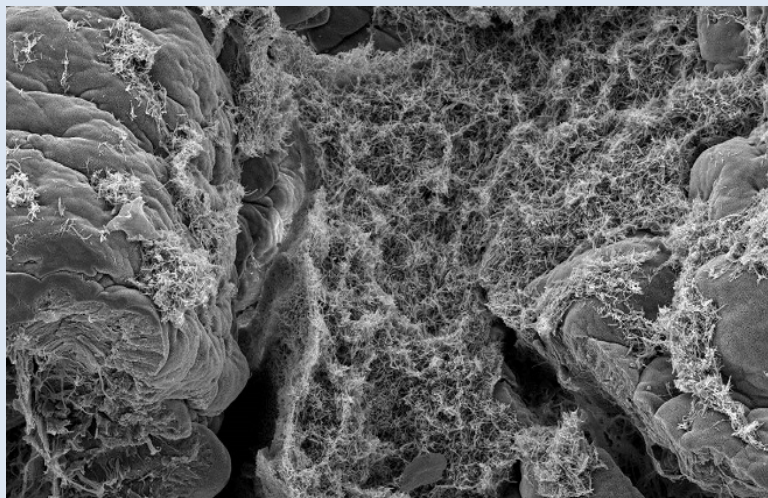
Please remember to cite the Center (NIH-P30-DK050306) and its core facilities (MPIC, H-MARC, G-MMC, and BDSC) in your publications.

CHRISTOPH THAISS, PHD, LAB UPDATE

Christoph A. Thaiss obtained his undergraduate degrees from the University of Bonn, Yale University, and ETH Zurich. After a short-term fellowship at the Broad Institute of MIT and Harvard, he performed his graduate studies at the Weizmann Institute of Science. After completion of his PhD, he joined the University of Pennsylvania as an Assistant Professor at the Microbiology Department of the Perelman School of Medicine.

The Thaiss lab studies how environmental factors influence human diseases. Of particular interest is how the intestinal microbiome is shaped by common lifestyle elements and in turn modulates the physiology of its mammalian host. Recent examples include the connection between circadian rhythms and the intestinal microbiome, the analysis of gut barrier function in metabolic disease, and the identification of “memory-like” microbiome features in recurrent obesity.

Dr. Thaiss was a recipient of a Center Pilot Grant.



BIOMEDICAL DATA SCIENCE CORE UPDATE

The Epic Inpatient Nutrition Registry is now available for researchers. The registry contains dietary screening for malnutrition and detailed dietary assessment by a registered dietitian for patients at risk of malnutrition. All patients hospitalized at HUP in the last three years are captured. The registry data is being used in a number of ongoing studies. If you are interested in using the inpatient nutrition registry data or other existing data sources at Penn for your research, feel free to reach out to the BDS for guidance.

Contact Lisa Nessel: nessel@penmedicine.upenn.edu

NEWSLETTER

FALL 2020 continued



This Photo by Unknown Author is licensed

EAB UPDATES

We would like to welcome Dr. Eugene Chang from the University of Chicago as the Center's new External Advisory Board Chair. Eugene has served as a member of the EAB since the Center's inception. We would also like to welcome Dr. Judy Cho from the Ican School of Medicine at Mount Sinai as well as Dr. Jacquelyn Maher from the University of California, San Francisco as our newest members of the EAB. We look forward to our Center members meeting them at the next in person Center Symposium.

FALL RESEARCH SEMINAR SCHEDULE

10/8

Marijana Vujkovic, PhD

Assistant Professor, Principal Genetics Scientist, CMJCVAMC
Identifying Novel Genetics Loci of Non-Alcoholic Fatty Liver Disease

10/15

Gary D. Wu, MD

Ferdinand G. Weisbrod Professor in Gastroenterology, Co-Director CMSDLLD, UPenn
Lessons learned from studying the impact of diet on the human gut microbiome

10/22

Jeffrey Morris, PhD

Professor, Director, Division of Biostatistics, UPenn
HepatoScore: new biological blood signature for hepatocellular carcinoma

10/29

De'Broski Herbert, PhD

Associate Professor of Immunology, Penn VET
Clarifying the controversial role of IL-33 in IBD pathogenesis

11/5

Kirk Wangenstein, MD, PhD

Assistant Professor of Medicine, UPenn
CRISPR screening in vivo uncovers genes required for liver repopulation and tumorigenesis

11/19

Judith Kelsen, MD

Program Director VEO-IBD, CHOP
Very early Onset Inflammatory Bowel Disease: A Model for Personalized Medicine in IBD

12/3

Kyong-Mi Chang, MD

Professor of Medicine, Associate Chief of Staff for Research, CMCVAMC
Visualizing the complex hepatic immune microenvironment in chronic hepatitis B using imaging mass cytometry

12/10

Amanda Muir, MD

Attending Physician, CHOP
Esophageal epithelial progenitor cells in eosinophilic esophagitis

12/17

Ravy Vajravelu, MD, MSCE

Instructor of Medicine, UPenn
Risk for Post-Colonoscopy Irritable Bowel Syndrome in Patients with and without Antibiotic Exposure

Please remember to cite the Center (NIH-P30-DK050306) and its core facilities (Molecular Pathology and Imaging Core, Host-Microbial Analytic and Repository Core, Genetically-Modified Mouse Core, and Biomedical Data Science Core) in your publications.

For access to our Center website and list of current members, please visit us at www.med.upenn.edu/molecular/