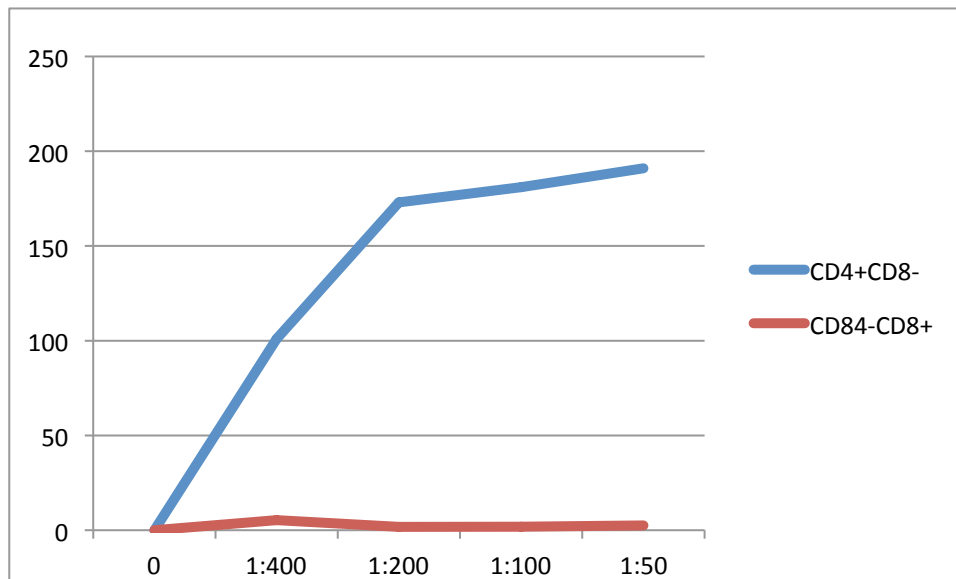


metal tag	143
antibody target/species	CD4 human
clone	RPA-T4
origin	custom (29.5.14 DT)
lot	
date conjugated	5/29/14
who conjugated	DT
concentration	1:1
location	BRB CORE
contact	BB
comment	

condition for titrating experiment		
material	PBMC ND411	3 x10 ⁶ cells
date tested	4/30/15	
Permealization	Perm II	

	0	1:400	1:200	1:100	1:50
CD4+CD8-	0	101	173	181	191
CD84-CD8+	0	5.33	1.74	1.88	2.55

recommended conc 1/200



Note: anti-human CD4 antibody (clone RPA-T4) was labeled with 143Neodymium. Healthy human PBMC was used to determine optimal staining concentration for the conjugated antibody.